

LOKESH INDUSTRIES

: Mfrs Cast Iron Pipes and Fittings and Valves

LOKESH FOUNDRIES PVT.LTD

: Mfrs Cast Iron Pipes and Fittings and Valves



*Valuable Goods for
your Valuable Requirements...*

Lokesh Industries



Lokesh Industries

Water is
"Everything"
and without water
it is "Nothing"

Our Cast Iron Pipes plays a very important role in carrying water in its purest form from the source to the needy areas. The use of this Cast Iron Pipes is century old practice-proven, consistent, easy to handle easy to install and above all cheap.

Our company is ISO 9001:2008 certified and having valid ISI license for manufacturing of Cast Iron Double Flanged Pipes, Cast Iron Double Flanged Sluice Valves, Member for Pig Iron and Cast Iron Section Committee, MTD6, Bureau of Indian Standards (ISI), New Delhi.

These pipes, pipe fittings and valves are extensively used in Rural Water Supply (R.W.S) schemes in Panchayat Raj, Metro Water Works, Sewerage Boards, Urban Development Authorities and Water Authorities- Hyderabad, Chennai, Jala Nigam Boards, Railways, Municipalities, Public Health Engineering Departments for Water Treatment Plants, Sewerage Treatment Plants, Sugar Mills, Coal Fields and Chemical Plants.

Management is having social cause, so we have been in this line for more than 3 decades. We are working with best infrastructure development companies such as L&T : Water Works Division, Ramky Infra., Sri Datri, IVRCL, Nagarjuna Constructions, A.V.R. Infra, Godavari Polymers Pvt. Ltd. and all major corporate clients and Class-A, Special Class contractors in A.P., Karnataka, Tamilnadu etc.



Cast Iron Double Flanged Pressure Pipes

Range : 80 mm dia to 600 dia
Length : 0.6 meter onwards 2.75 meter



Bell Mouth



C.I.D. Joints



Duck Foot Bend



All Flanged Tee



Semi Circular



Puddal Pipe



Ventilation Column



D/F Bend



D/F Bend



Flang Spigot

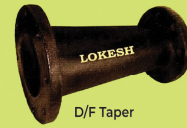


Products at a Glance

- ✦ Cast Iron Double Flanged Pressure Pipes
- ✦ Cast Iron Short D/F Pipes
- ✦ Pedal Flanged Pipes
- ✦ Double Flanged Duck Foot Bend
- ✦ All Flanged Tees
- ✦ Double Flanged Bend
- ✦ Double Flanged Tapers
- ✦ Double Socket Bends
- ✦ All Socket Tees
- ✦ Bell Mouths
- ✦ Semi Circular Bends
- ✦ All Flanged Air Valve Tees
- ✦ Plain Bends
- ✦ Plain Tees
- ✦ Double Socket with Flanged Branch Tee
- ✦ Flanged Spigots
- ✦ Socket Spigot (Tail piece)
- ✦ CID Joints
- ✦ Flanged Sockets
- ✦ Surface Box
- ✦ Cast Iron Ventilation Columns Bases
- ✦ Manhole Covers
- ✦ Cast Iron Rungs (Steps)
- ✦ Cast Iron Water Meter Boxes
- ✦ Mechanical Joints

- ✦ CI Sluice Valves
- ✦ Sluice Valves with gear operate
- ✦ Reflux Valves (Non Return Valves)
- ✦ Kinetic Double Air Valves
- ✦ Double Air Valves

-
- ✦ Cast Iron Earth Pipes
 - ✦ Tobacco Curing Barren Pipes
 - ✦ Chemical Plant Acid Running Pipes
 - ✦ Coal Fields Sand Stowing Pipes
 - ✦ Sugar Mill Machinery Spares
 - ✦ Cast Iron Machinery Parts
 - ✦ Boiler Room Floor Tiles
 - ✦ Industrial Flooring Tiles
 - ✦ Milk Projects, Dairies, Cold Storage Flooring Tiles
 - ✦ Cast Iron Gratings
 - ✦ Fire Bars
 - ✦ Counter Weights



D/F Taper



Double Socket Bend



All Socket Tee



Plain Tee



Plain Reducer



Flanged Socket Tail Piece

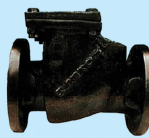
Valves



Double Air Valve



DI Air Valve



Reflux Valve

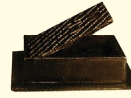


Sluice Valve



DI Sluice Valve

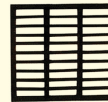
Industrial Castings



Surface Box



Manhole Covers



Cast Iron Gratings



Floor Tiles



Stair Case Tiles



Earth Pipes



LOKESH INDUSTRIES

R.S.No.265/5, Near Uppuluru Railway Station
Manthana Village, Kankipadu Mandal (Vijayawada Rural)
Krishna District, A.P -521 151

Cell : 98492 23022, 98664 44557, 94935 79226

Email : lokeshpipes@gmail.com



Hotels

Resorts

Farmhouses

**No more
electrical
shocks !**

Perfect Earthing to Protect Everything

through Cast Iron Earthing Electrode Pipes

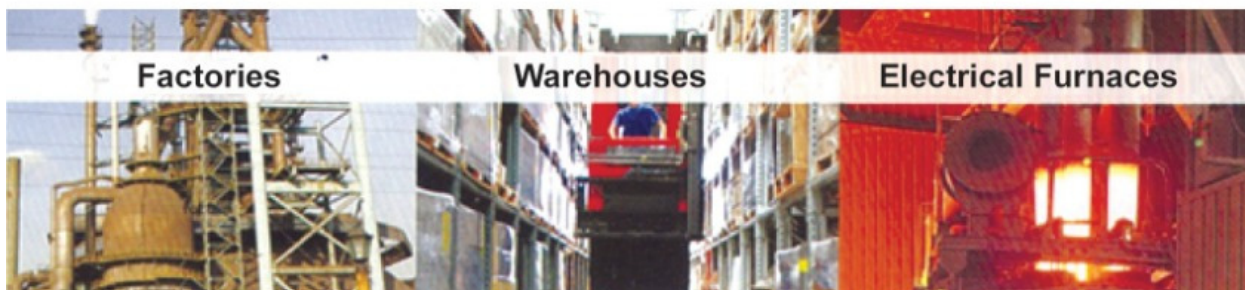


CAST IRON EARTHING ELECTRODE PIPES

The necessity of electricity for any work activity is inevitable in this modern world, this makes electricity the indisputable need for livelihood of a modern man, but even the slightest ignorance in the way of handling it may spell disasters, that is why we have **CAST IRON EARTHING ELECTRODE PIPES** to protect your assets from the slightest leak that may be possible in any part of the electrical network.

CAST IRON EARTHING ELECTRODE PIPES are ideal for all kinds of electrical installations ranging from the small house hold to a whole housing complex, from electric poles to a large power station. Some of the important areas of installations include Hotels & Resorts, Shopping complexes, Hospital buildings, Schools & Colleges, Office complexes, Housing complexes, Factories, Warehouses, Power sub-stations & Power generation plants, Electrical furnaces, Sugar mills, farm house, lift irrigation, water works etc.

Cast-Iron Electrode Earth Pipes are having machined smooth surface, the top of the flange with different diameters, different lengths including cone to maintain total connectivity with earth. These pipes are manufactured as per the manufacture specification stated or as per the customer requirement or by any inspectorate authorities specification.



Factories

Warehouses

Electrical Furnaces

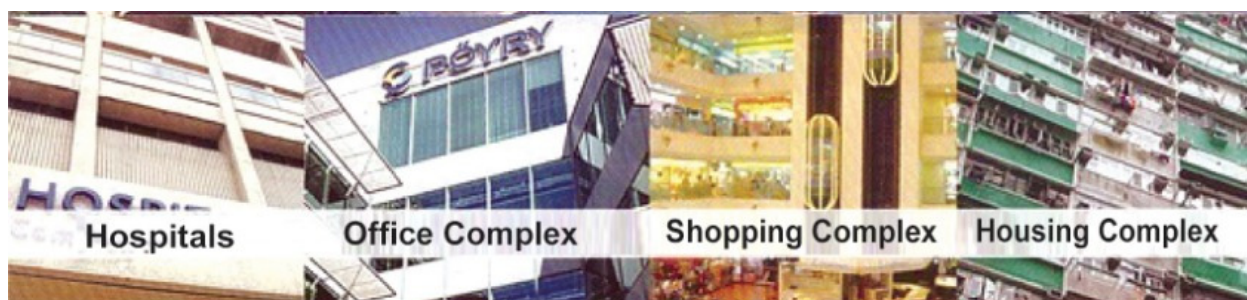
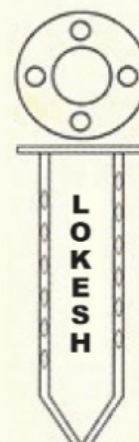


Table of Cast-Iron Earthing Electrode Pipes

Size in DIA	Barrel OD	Flange OD	P.C.D.	No. of Holes	Holes Diameter	Flange Thickness	Dia of Bolts
80	98	200	160	4	19	21.0	16
100	118	220	180	4	19	22.0	16



Note : The pipes are available at different lengths like 2, 2.5, 2.75 & 3 meters

LOKESH INDUSTRIES

Rs. No. 265/5, Near Uppuluru Railway Station, Manthana (V),
Vijayawada Rural, Krishna (Dt) - 521151, A.P. INDIA

Contacts :

B. Lokesh : 9866444557

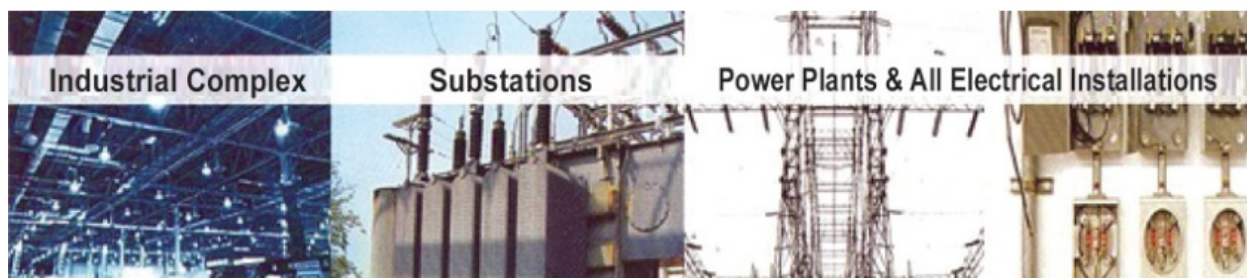
B. Venkata Rao : 9849223022

P. Ravindra : 7671822997

Office : 9493579226

E-mail : lokeshpipes@gmail.com

Local Dealer :



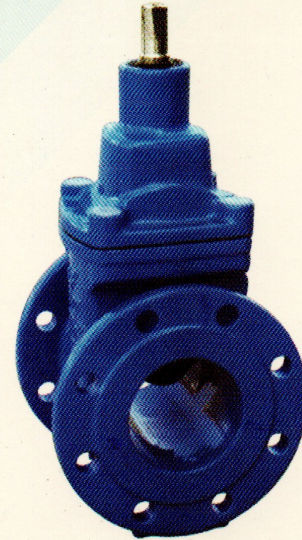
LOKESH

Resilient Seated Gate Valve

SPECIFICATION

DN	mm	40~600	
Standard Pressure	Mpa	1.0Mpa	1.6Mpa
Body Test Pressure	Mpa	1.5Mpa	2.4Mpa
Sealing Test Pressure	Mpa	1.1Mpa	1.76Mpa
Application Temperature		≤80°C	
Medium		Portable Water	
Key Material		GGG/SG	

(Also available in PN25 on request)



ADVANTAGE

»Non-maintenance design, inside and outside electrostatic epoxy resin powder coating of minimum 250 microns. The valve can be installed under the ground directly.

»The valve adopts the back seal and the stem seal, those double seals can avoid any top leakage when installation.

»The customer can easily replace the top seal "O" rings under the pressure.

»The valve adopts flat bottom design, this ensures there is no space for any solids in the fluid to settle inside the valve and this reduces flow resistance thus reducing pressure drop.

»The wedge adopts bidirectional groove design ensures the best reliable seal.

»A set of seal pressure angle adopts gradual design.

»The pressured surface of stem adopts high strength self-lubricated materials, the valve can be opened and closed easily.

»The bonnet, body castings adopt equal thickness design to avoid the outside leakage by the stress function.



LOKESH

Valves for 24/7 Water Supply Scheme



DI Resilient Seated Gate Valve

Standard Specifications

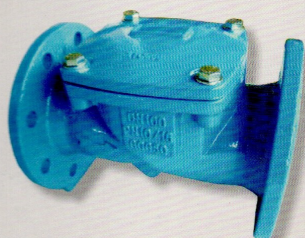
Size Range	50 mm to 600 mm
Mfg. / Design Std.	BS 5163, DIN 3352, ISO 7259
Face to Face Length	BS 5163, IS : 14846
Pressure Rating	PN 1.0, PN 1.6, PN 2.0, PN 2.5
Flanged Ends	IS/BS/ANSI/DIN
Body Materials	D.I. to GGG-40/50 of DIN 1693 or 400 / 12 of IS:1865
Disc / Wedge	Fully encapsuled with EPDM rubber
Trims	S.S. / Copper Alloy
Special Features	Valves fully protected from corrosion by electro-statically applying epoxy powder coating. Pocket less body passage. 'O' ring gland sealing. Low torque



DI High Performance Air Release Valve

Standard Specifications

Size Range	50 mm to 200 mm
Design Feature	Combination type (Kinetic & Automatic)
Pressure Rating	PN 1.0, PN 1.6, PN 2.5
Flanged Ends	IS/BS/ANSI/DIN
Body Materials	D.I. to GGG-40/50 of DIN 1693 or 400 / 12 of IS:1865
Floats	Stainless steel
Orifice Seal	S.S. With Nitrile/Neoprene Rubber
Fasteners	Stainless Steel
Special Features	<ul style="list-style-type: none"> ▶ Epoxy powder coating (EP-P) inside and outside. ▶ High Discharge and Anti Vacuum Design. ▶ Tamper Proof Air Vents.



Rubber Disc Check Valve

Standard Specifications

Size Range	50 mm to 600 mm
Mfg. / Design Std.	BS-EN 1074-3
Pressure Rating	PN 1.0, PN 1.6, PN 2.5 & PN 4.0
Flanged Ends	IS/BS/ANSI/DIN
Body & Disc Materials	D.I. to GGG-40/50 of DIN 1693 or 400 / 12 of IS:1865
Special Features	Valves fully protected from corrosion by electro-statically applying powder or liquid epoxy coating
Disc	Fully encapsuled with EPDM rubber

LOKESH AQUA PRODUCTS PVT.LTD

: Mfrs. Poultry Feeds

Est.1994

LOKESH AQUA PRODUCTS PVT.LTD

High quality poultry feed
manufacturers having
all facilities to serve Corporate
Co as a Processar
per day 50 tons
capacity poultry feed

Mfrs:Poultry Feeds

D.No: 13-16, Nidamanuru,
Vijayawada Rural, Krishna Dist-521104.

Cell.No : 98492 23022

E-Mail:lokeshaquahotmail.com

manufacturers of Poultry Feeds

Sri Venkateswara Foods & Feeds.

Hyderabad,

PADMALAYA ENGINEERING COMPANY

: Kirloskar Brothers Ltd.

Distributors for Mono Block Pumps & USHA Diesel Oil Engines



VINAYAKA ENGINEERING COMPANY : CRI Submersible Pumps & CPVC Pipes

